

FRC SERIES – INTEGRAL STEADY RESTS

THE
BEST.

A Unique Integrated Cylinder Design Eliminates Issues with Mounting and Installation



FRC Steady Rests are suitable for all standard turning applications. They have a broad gripping range and compact body with an integrated cylinder. This eliminates the need for machine modifications to address space constraints during installation. The integrated actuating cylinder is ideal where a smaller, compact envelope is required. Available with clamp ranges from 12mm – 870mm, the FRC can be mounted to flat or slant bed lathes.

- Ultra-compact Steady Rest
- Integrated actuating cylinder
- Provision for centralized lubrication
- Provision for proximity feedback for maximum opening
- Provision for coolant flush through arms
- Operating pressure 30 to 60 bar with pressure intensifier up to four times
- Mounting brackets available.
- Complete solutions and installation as per customers requirements

TURNING

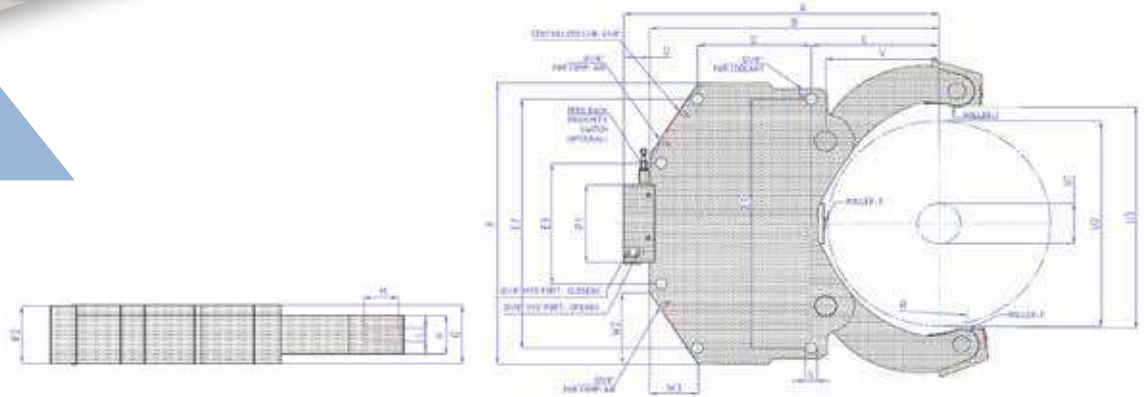
GRINDING

HEAVY DUTY

SPECIALS

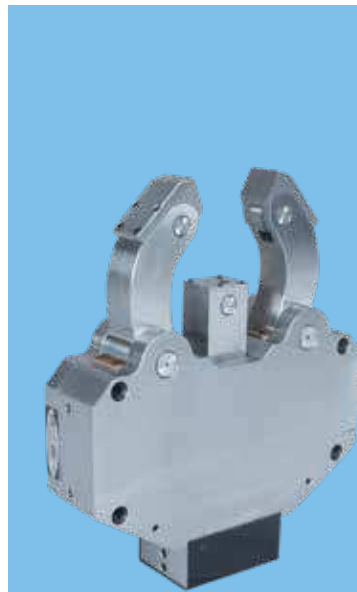
FRC SERIES TECHNICAL SPECIFICATIONS

THE
BEST.



FRC Integral Steady Rests for Turning Applications

All Kitagawa NorthTech turning and grinding steady rest models come with a spare set of rollers and spare chip guard.



	FRC3025	FRC4532	FRC8536	FRC1043	FRC1447	FRC1051	FRC2568	FRC4587	
A	434	509	537	622	647.5	707	847	1244	
B	380	465	493	578	603.5	661	803	1200	
C	146	178	208.5	280	305.5	292.5	415	640	
D	155	210	210	220	220	260	312	400	
E1	365	400	400	510	510	620	700	1100	
E2	365	400	400	510	510	620	470	1100	
E3	670	
F	438	500	500	600	600	700	760	1200	
G	110	145	145	145	145	145	165	198	
K	53	68	68	98	98	98	98	118	
L	25	29	29	29	29	32	32	75	
M	52	62	72	80	80	80	100	160	
O	54	44	44	44	44	59	44	44	
P1	158	172	172	194	194	194	194	260	
P2	109	144	144	144	144	144	144	197	
R	168	215	235	280	300	325	430	606	
S	23	23	23	26	26	26	35	35	
V	124.5	167	191	214.5	259	353	480	
W2	132	105	100	160	158	179	188	254	
W3	83	101.5	97	74	104	101	108	135	
Centering Range	U1	30	45	85	100	140	100	250	450
	U2	255	320	360	430	470	510	680	870
Maximum axial opening	U3	291	358	415	475	524	559	729	968
Cylinder bore	d	40	50	50	60	60	60	80	
Hyd.connection	h	G1/8"	G1/8"	G1/8"	G1/8"	G1/8"	G1/8"	G1/8"	
Operating pressure. Min/ Max	bar	20-70	20-70	20-70	20-60	20-60	20-60	20-60	
Total clamping force	daN	4500	5500	5500	6800	6800	6800	9200	
Centering accuracy over the whole clamping range	mm	0.04	0.06	0.06	0.06	0.06	0.1	0.1	0.2
Repeatability	mm	0.005	0.005	0.005	0.01	0.01	0.02	0.02	0.02
Weight	kg	73	148	143	195	234	252	370	1337



The Best Workholding.

301 E. Commerce Drive, Schaumburg, IL 60173
800.222.4138 | www.kitagawa.us | info@kitagawa.us