



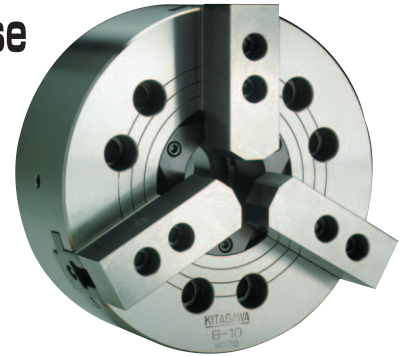
**CHUCK**

# Large Thru-Hole Power Chuck (Direct Mount)

## B-A series

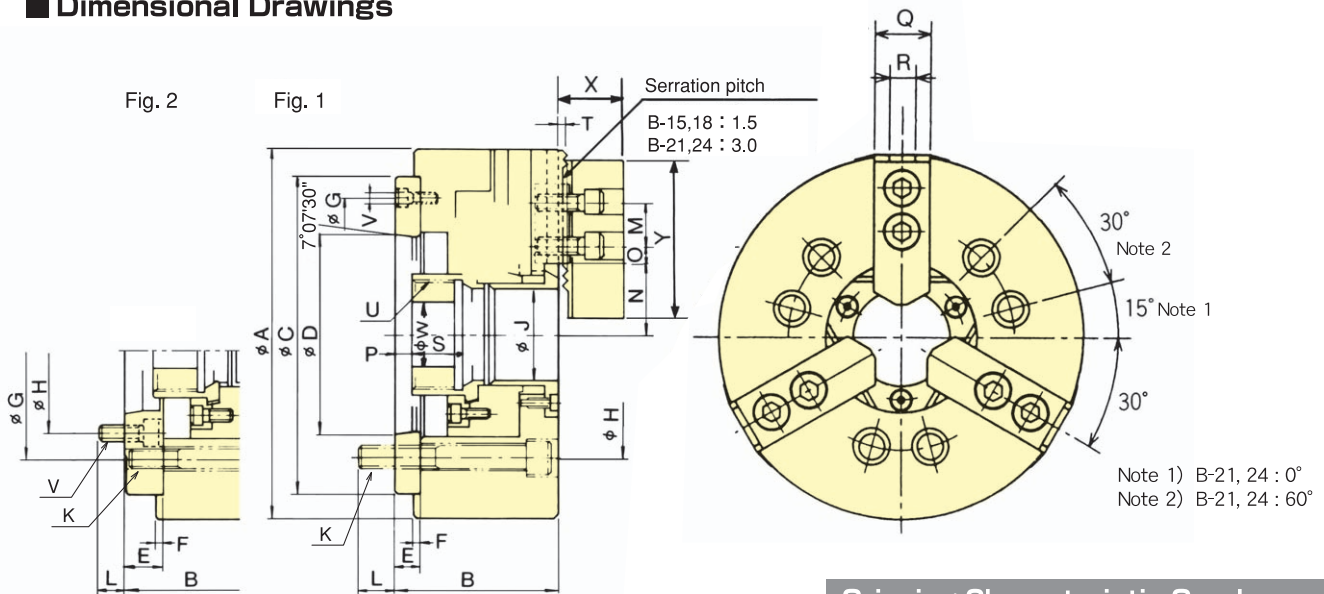
Equipped with Chuck Adaptor to suit Spindle Nose  
Universally recognised standard chuck

\* CE correspondence

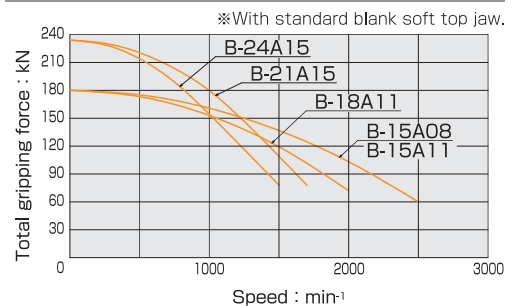


Standard Chuck

### Dimensional Drawings



### Gripping Characteristic Graphs



### Dimensions

\*B-15A08 is referred to in Fig.2. \*Blank draw nut equipped.

Dimensions Model	A	B	C	D	E	F	G	H	J	K	L	M	N max.	N min.	O max.	O min.	P max.	P min.	Q	R	S	T	U max.	V	W	X	Y
B-15A08	381	160	300	139.719	33	6	235	171.4	117.5	6-M20	24	43	82	76.7	43.75	18.25	44	21	62	22	39	5	M130x2.0	6-M16	60	70	165
B-15A11	381	149	300	196.869	22	6	260	235.0	117.5	6-M20	28	43	82	76.7	43.75	18.25	33	10	62	22	39	5	M130x2.0	3-M10	60	70	165
B-18A11	450	149	380	196.869	22	6	320	235.0	117.5	6-M20	28	43	82	76.7	78.25	18.25	33	10	62	22	39	5	M130x2.0	3-M10	60	70	165
B-21A15	530	161	380	285.775	27	6	330.2	330.2	140	6-M22	34	60	98.5	93.2	87.5	21.5	38	15	65	25	39	5	M155x3.0	3-M12	80	73	180
B-24A15	610	170	380	285.775	27	6	330.2	330.2	165	6-M22	35	60	108	102.7	117.5	21.5	47	24	65	25	40.5	5	M175x3.0	3-M12	80	73	180

### Specifications

Specifications Model	Thru-Hole mm	Gripping range mm Max.	Gripping range mm Min.	Jaw Stroke (diameter) mm	Plunger Stroke mm	Max. Draw Bar Pull Force kN (kgf)	Max. Gripping Force kN (kgf)	Max. Speed min <sup>-1</sup>	Net Weight with Soft top jaws kg	Moment of inertia kg·m <sup>2</sup>	Matching Cylinder	Max. pressure MPa (kgf/cm <sup>2</sup> )	Matching Hard top jaw	Matching Soft top jaw	Spindle nose size
B-15A08	117.5	381	30	10.6	23	71.0 (7240)	180.0 (18355)	2500	134.0	2.470	F2511H	2.30 (23.5)	HB15A1	SB15C1	A2-8
B-15A11	117.5	381	30	10.6	23	71.0 (7240)	180.0 (18355)	2500	127.0	2.385	F2511H	2.30 (23.5)	HB15A1	SB15C1	A2-11
B-18A11	117.5	450	30	10.6	23	71.0 (7240)	180.0 (18355)	2000	178.0	4.775	F2511H	2.30 (23.5)	HB15A1	SB15C1	A2-11
B-21A15	140	530	87	10.6	23	90.0 (9177)	234.0 (23861)	1700	246.0	9.250	F2511H	3.00 (30.6)	HB18B2	SB18A2	A2-15
B-24A15	165	610	109	10.6	23	90.0 (9177)	234.0 (23861)	1400	304.0	16.850	F2511H	3.00 (30.6)	HB18B2	SB18A2	A2-15